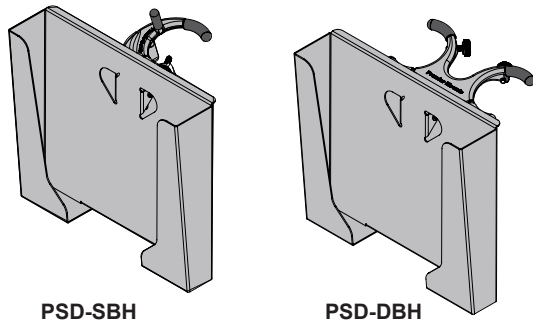


Introduction



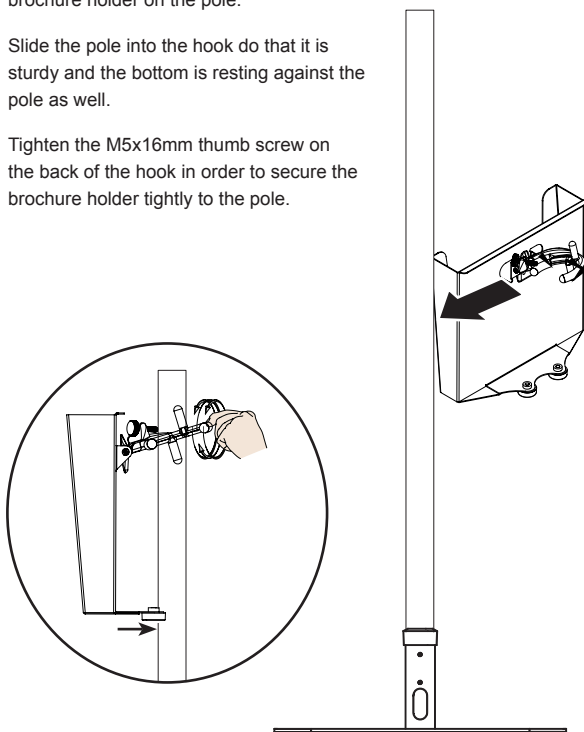
The PSD-DBH is a Brochure Holder for Dual-Pole Carts and Stands. The PSD-SBH, is a Brochure Holder for Single-Pole Carts and Stands, but can also be used in applications with dual poles as well. These brochure holders are perfect for the rental and staging industry and make it simple to display useful literature in plane view under a display.

Step 1

? Are you installing the PSD-DBH? If YES proceed to step 2. If you are installing the PSD-SBH, please adhere to the instructions below.

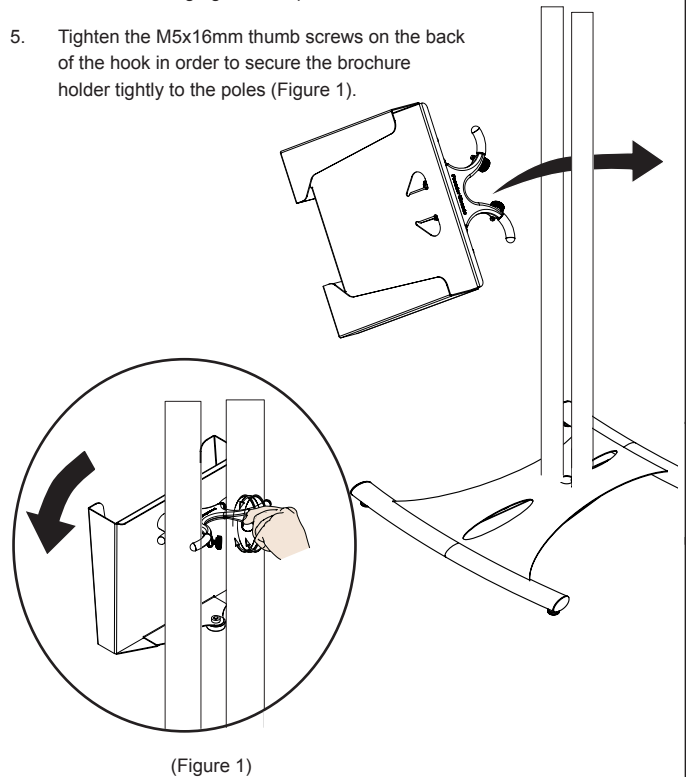
Both of the brochure holders can be installed before or after a flat-panel has been mounted on the cart or stand. Their versatile hooks allow them to be easily installed, uninstalled and moved to a different location.

1. Line up the hook on the back of the PSD-SBH with the single pole where it will be mounted.
2. Determine the desired height of the brochure holder on the pole.
3. Slide the pole into the hook do that it is sturdy and the bottom is resting against the pole as well.
4. Tighten the M5x16mm thumb screw on the back of the hook in order to secure the brochure holder tightly to the pole.



Step 2

1. Line up the hook on the back of the PSD-DBH with the dual poles where it will be mounted.
2. Determine the desired height of the brochure holder on the pole.
3. Turn the PSD-DBH on its side so that the back hooks are vertical.
4. Slide the PSD-DBH's hooks sideways through the dual poles. Once they are in turn the PSD-DBH back to the upright position so that it is sturdy and the bottom is resting against the pole.
5. Tighten the M5x16mm thumb screws on the back of the hook in order to secure the brochure holder tightly to the poles (Figure 1).



PREMIER MOUNTS

LIMITED LIFETIME WARRANTY

What and Who is Covered by this Limited Warranty and for How Long

Premier Mounts warrants this product to be free from defects in material and workmanship for the lifetime of the original owner of this product. The limited warranty is valid only for the original purchaser of the product.

What Premier Mounts Will Do

At the sole option of Premier Mounts, Premier Mounts will repair or replace any product or product part that is defective. If Premier Mounts chooses to replace a defective product or part, a replacement product or part will be shipped to you at no charge, but you must pay any labor costs.

What is Not Covered; Limitations

PREMIER MOUNTS DISCLAIMS ANY LIABILITY FOR DAMAGE TO MOUNTS, ADAPTERS, DISPLAYS, PROJECTORS, OTHER PROPERTY, OR PERSONAL INJURY RESULTING, IN WHOLE OR IN PART, FROM IMPROPER INSTALLATION, MODIFICATION, USE OR MISUSE OF ITS PRODUCTS. PREMIER MOUNTS DISCLAIMS ALL OTHER WARRANTIES, EXPRESS OR IMPLIED, INCLUDING WARRANTIES OF MERCHANTABILITY AND FITNESS FOR A PARTICULAR PURPOSE. PREMIER MOUNTS IS NOT RESPONSIBLE FOR INCIDENTAL OR CONSEQUENTIAL DAMAGES, INCLUDING BUT NOT LIMITED TO, INABILITY TO USE ITS PRODUCTS OR LABOR COSTS FOR REMOVING AND REPLACING DEFECTIVE PRODUCTS OR PARTS. SOME STATES DO NOT ALLOW THE EXCLUSION OR LIMITATION OF INCIDENTAL OR CONSEQUENTIAL DAMAGES, SO THE ABOVE LIMITATION OR EXCLUSION MAY NOT APPLY TO YOU.

What Customers Must Do for Limited Warranty Service

If you discover a problem that you think may be covered by the warranty you MUST REPORT it in writing to the address below within thirty (30) days. Proof of purchase (an original sales receipt) from the original consumer purchaser must accompany all warranty claims. Warranty claims must also include a description of the problem, the purchaser's name, address, and telephone number. General inquiries can be addressed to Premier Mounts Customer Service at 1-800-368-9700. Warranty claims will not be accepted over the phone or by fax.

Premier Mounts
Attn: Warranty Claim
3130 East Miraloma Ave.
Anaheim, CA 92806

How State Law Applies

THIS WARRANTY GIVES YOU SPECIFIC LEGAL RIGHTS, AND YOU MAY ALSO HAVE OTHER RIGHTS WHICH VARY FROM STATE TO STATE.